

# *25G 850nm VCSEL single and array chips*

## *RC0850-025MA-S(A)*

---

# Legal Disclaimer

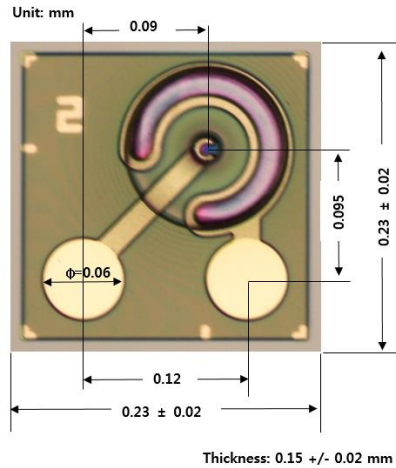
Information in this presentation is provided in connection with Seoul Viosys products and/or business operation. While Seoul Viosys has made every attempt to ensure that the information contained in this presentation has been obtained from reliable sources, Seoul Viosys is not responsible for any errors or omissions, or for the results obtained from the use of this information.

All information in this presentation is provided "as is" with no guarantee of completeness, accuracy, timeliness or of the results obtained from the use of this information, and without warranty of any kind, express or implied, including, but not limited to warranties of merchantability, performance, and fitness for a particular purpose, or any warranty otherwise arising out of any proposal, specification, or sample.

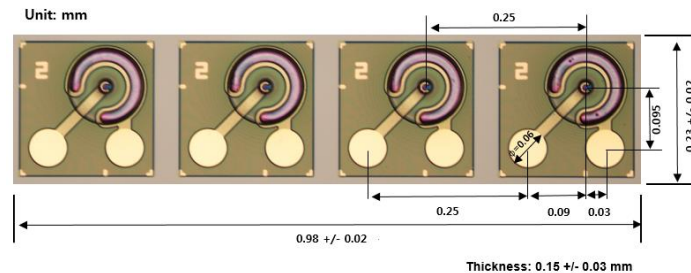
In no event will Seoul Viosys, its related corporations, or the employees thereof be liable to you or anyone else for any decision made or action taken in reliance on the information in this presentation or for any consequential, special or similar damages, even if advised of the possibility of such damages.

# 1. Specifications

## RC0850-025MA-S



## RC0850-025MA-A



## Electrical and optical characteristics

(T = 25°C unless otherwise stated)

Parameter	Symbol	Min.	Typ.	Max.	Unit	Note
Output power	$P_o$	1.8	2.3		mW	I = 6 mA
Threshold current	$I_{th}$		0.6	1.0	mA	
Operation voltage	$V_o$		2.2	2.4	V	I = 6 mA
Series resistance	$R_s$		60	80	$\Omega$	I = 6 mA
Beam divergence	$\theta$		28	35	degree	FW at 1/e <sup>2</sup> I = 6 mA
Wavelength	$\lambda$	840	850	860	nm	I = 6 mA
Spectral width	$\Delta\lambda$			0.65	nm	I = 6 mA
Slope efficiency	$\eta_d$	0.24			mW/mA	
Peak temperature dependence	$\Delta I/\Delta T$		0.06		nm/°C	T = 0 to 70°C
3dB bandwidth	GHz	15	17			I = 6 mA

## Absolute maximum ratings

(T = 25°C unless otherwise stated)

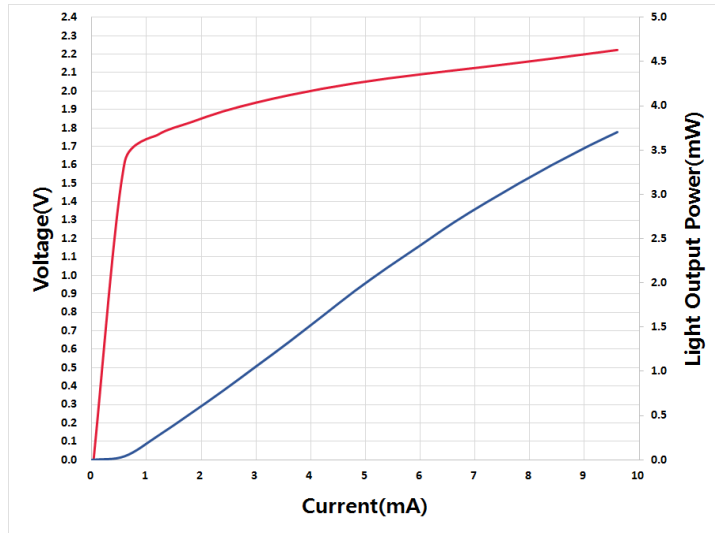
Parameter	Symbol	Rating	Unit	Notes
Forward current (Ta=25°C)	$I_f$	12	mA	
Reverse voltage	$V_r$	5	V	
Operating temperature range	$T_{op}$	0 ~ 80	°C	
Storage temperature	$T_{stg}$	-40 ~ 100	°C	
Reflow temperature	$T_{ref}$	260	°C	Max. 10sec 2mm from case

## Notice

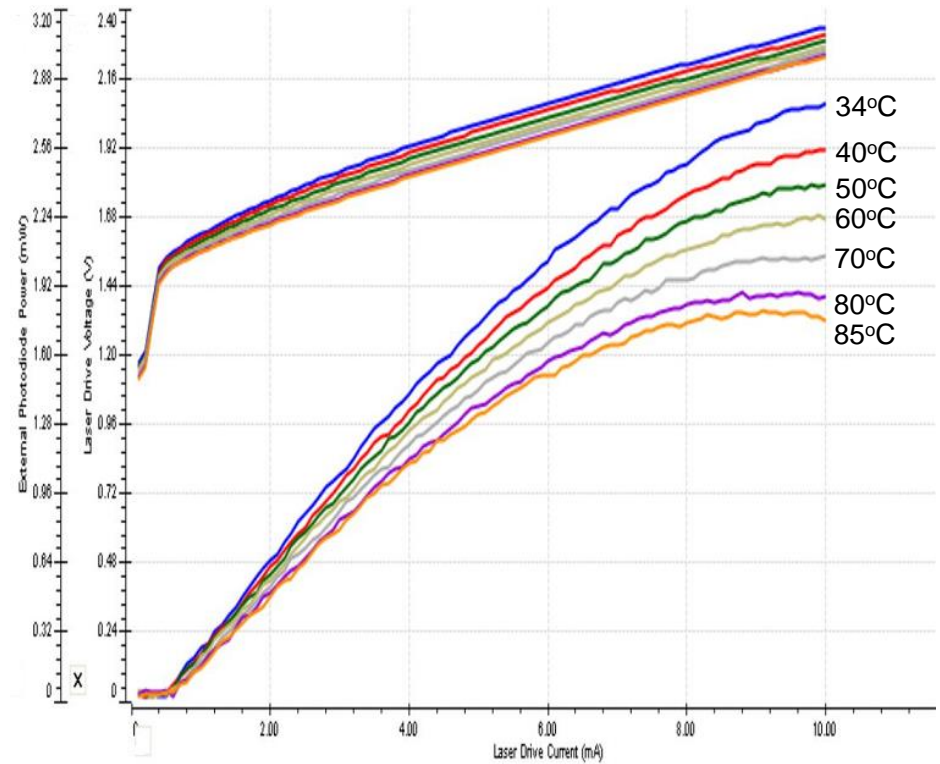
Conditions exceeding those listed may cause permanent damage to the device. Devices subjected to conditions beyond the limits specified for extended periods of time may adversely affect reliability.

## 2. L-I-V & Spectrum

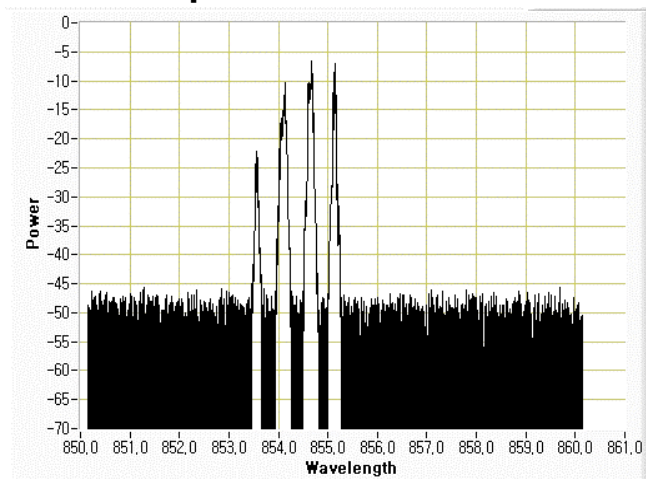
L-I-V at 25°C



L-I-V-T

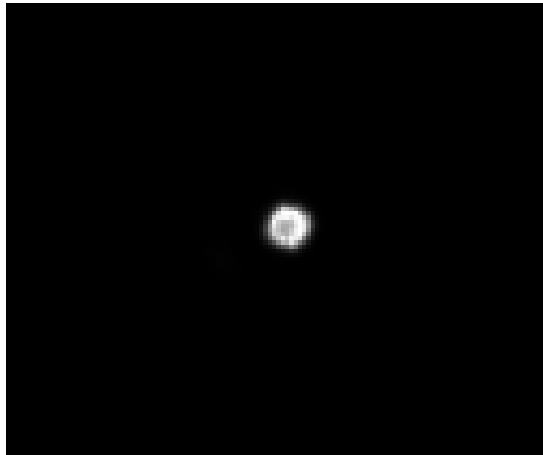


Spectrum at 25°C

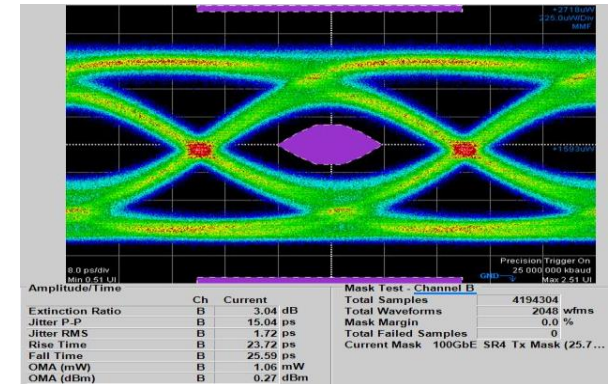


### 3. Near-field & $f_{3dB}$ & Eye pattern

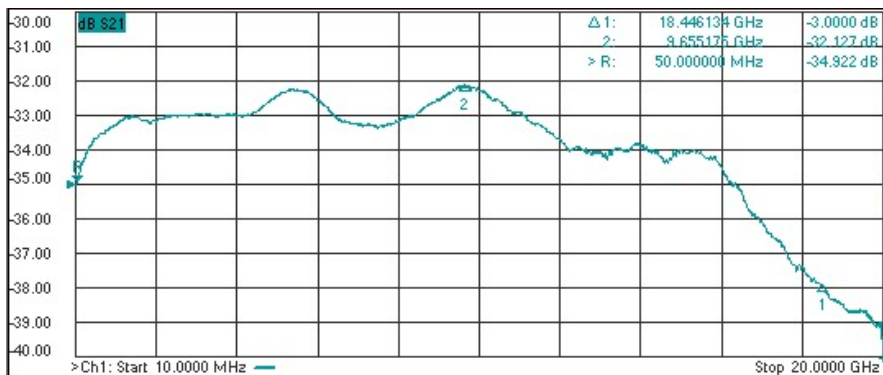
Near-field at 6mA



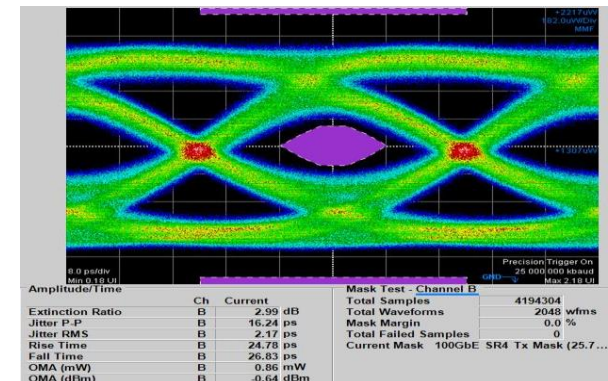
Eye pattern at 6mA (25°C)



$f_{-3dB}$  at 6mA (25°C)



Eye pattern at 6mA (80°C)





**THANK YOU!**

[www.seoulviosys.com](http://www.seoulviosys.com)